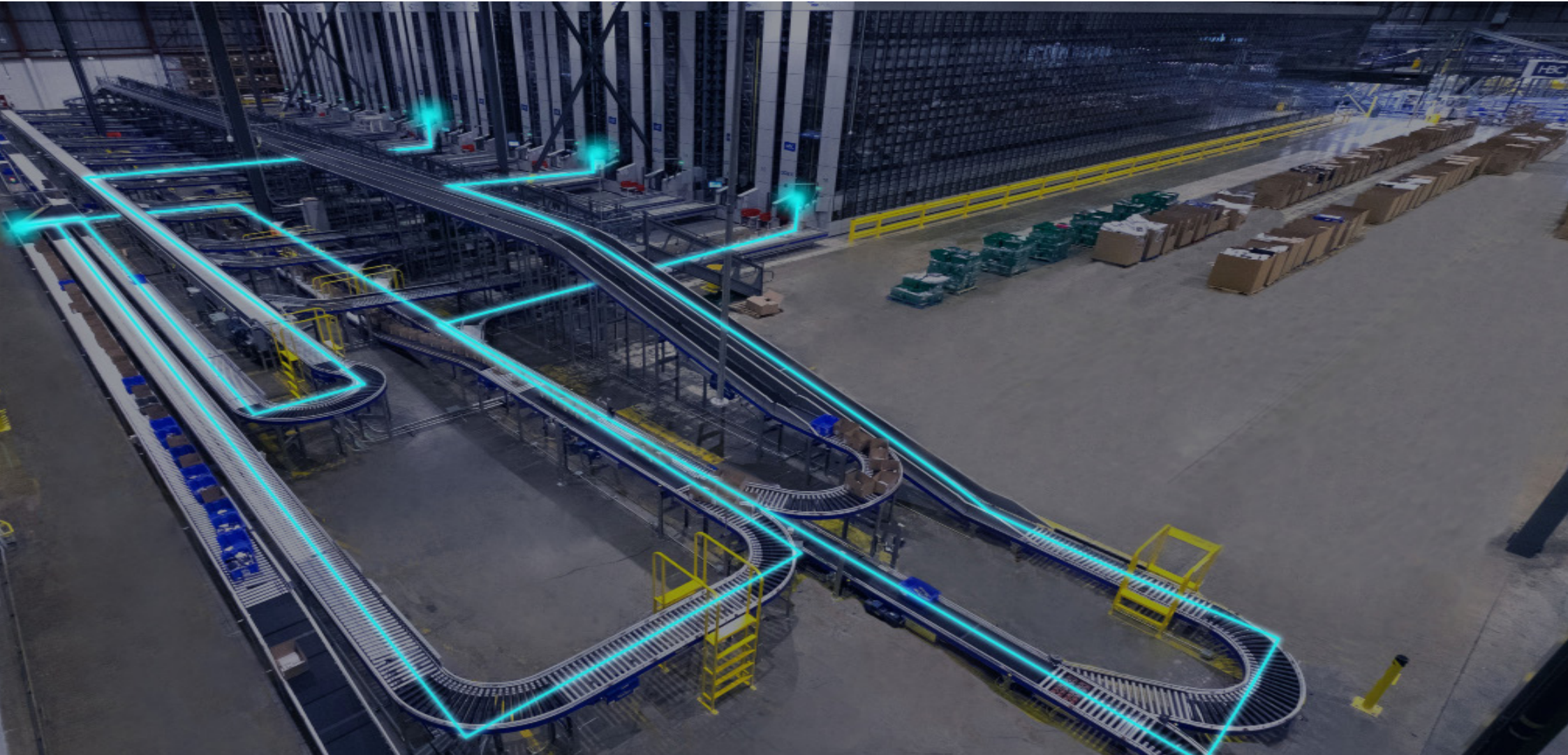


Welcome to your new destination, logistics automation.

Discover the integration of Toyota logistics solutions and come with us into the future.




TOYOTA

MATERIAL HANDLING

www.toyota-forklifts.co.uk

CONTENTS

	Zero waste Achieve maximum efficiency in all processes.	4
	Ad-hoc projects Flexibility standards for customised solutions.	6
	How we do it Methodology	8
	Logistics solutions Reception Warehousing Order picking Packing and Shipment	10
	Software	20
	All facilities	22

ZERO WASTE

Achieve maximum efficiency in all processes.

Discover our new integrated logistics automation solutions enabling us to design custom-made projects for you. We integrate the latest market technology and offer maximum profitability and intralogistic operational efficiency.

We are committed to delivering greater productivity, profitability and total energy efficiency based on our Lean focus and Zero waste methodology: reducing waste to the maximum extent possible and achieving maximum quality and efficiency throughout the process using Toyota's integration processes.

Find out how to reach your new destination.







AD-HOC PROJECTS

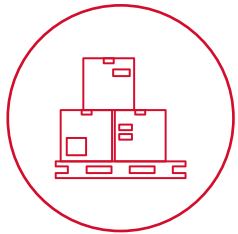
Flexibility standards for customised solutions.

At Toyota Material Handling, we analyse and define the most suitable solution for each type of client, providing a panoramic view and defining the most efficient product design in each operation.

As a logistics automation solutions integrator/partner, we focus on respecting the particular features of each project, and can provide specific automation solutions through to complete global solutions.

Discover the Toyota flexibility standards.

METHODOLOGY



Define the process

We define the project processes and objectives. We develop models based on the order and inventory profiles, cycle times and customer purchasing patterns to ensure a successful implementation.



Design the perfect solution

The best design is optimised by analysing the strengths and weaknesses of the previous steps to develop the solution best suited to your needs.



Validate

We quantify the estimated costs and benefits of the design, including the ROI. If the project is accepted as viable, we can create the model of the selected design.



Execute

Our team implements the project within the agreed time frames, observing the highest occupational safety and quality levels. In both greenfield or brownfield operation.



Commission

We work together with the operations and IT team so that, once the system is installed, all the necessary tests are carried out and the system is functioning to perfection.

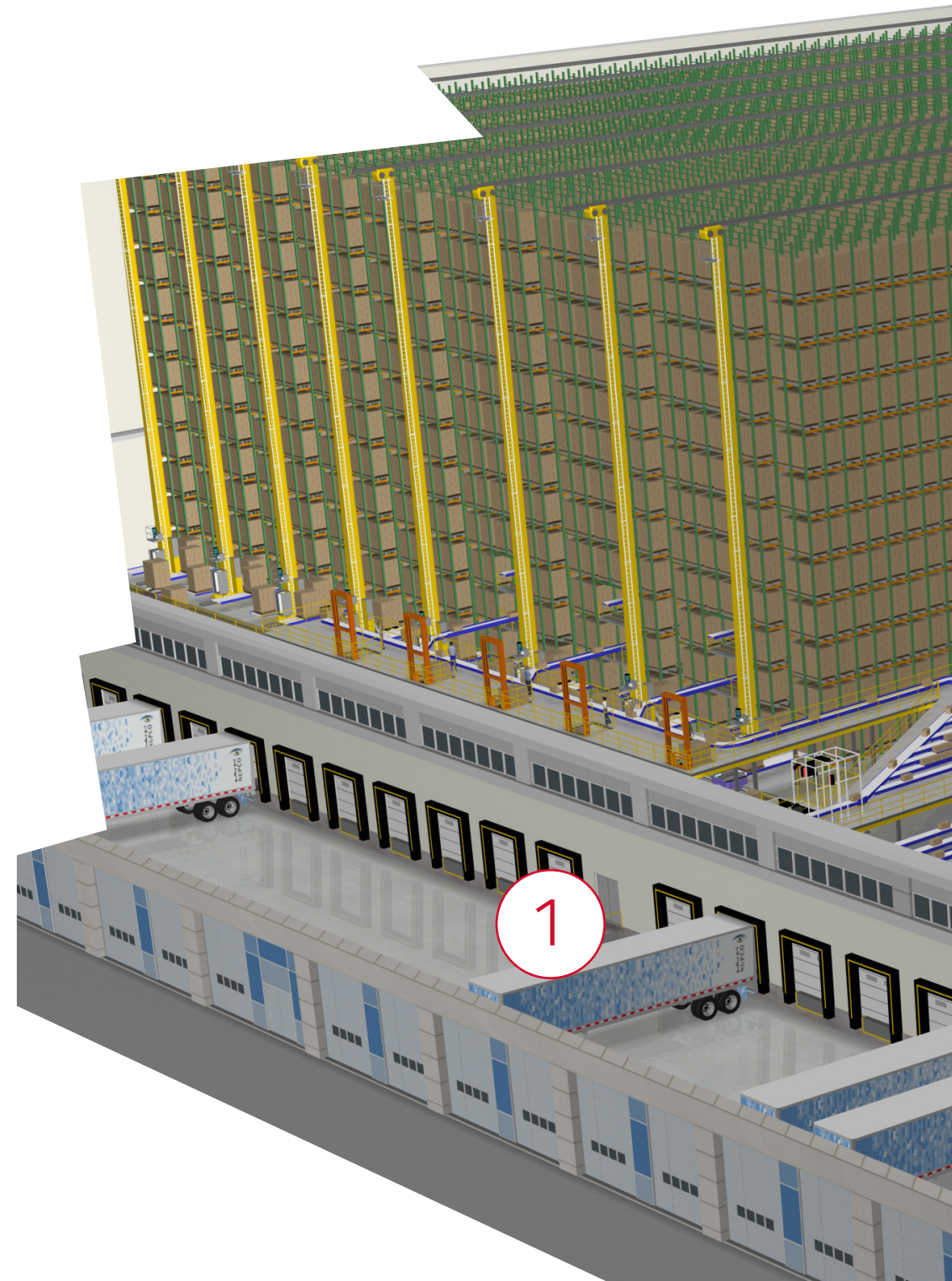


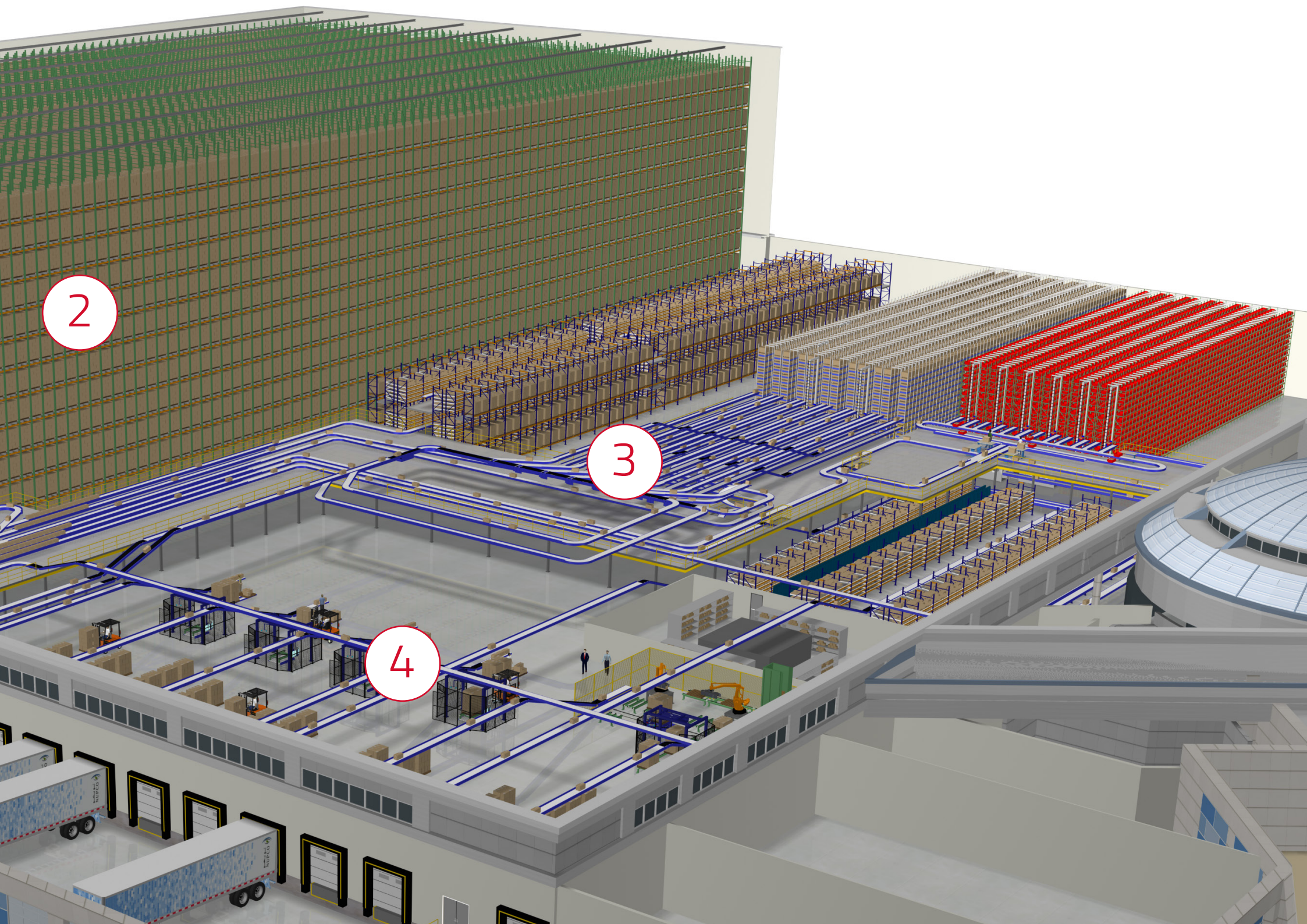
Continuous support

We provide Technical Support and customer service, and we provide the option of resident technicians who validate the design in the first phase.

LOGISTICS SOLUTIONS

- 1 Reception
- 2 Warehousing
- 3 Order Picking
- 4 Packing and Shipment





2

3

4

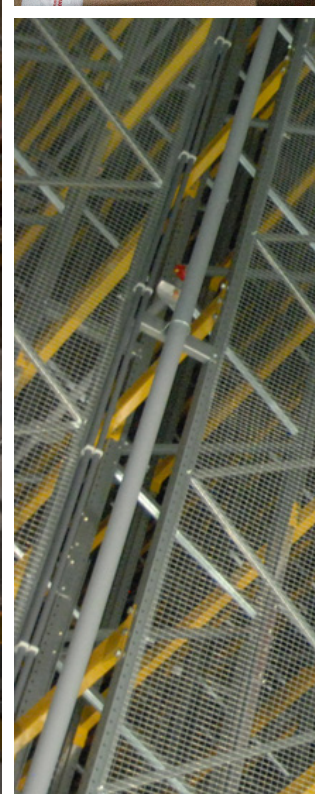
1 RECEPTION

Any logistics and manufacturing operation starts with the reception of materials. Whether loaded on pallets or loose, the process starts with the registration of the items before they are distributed to other zones.

Quality controls, repacking and volumetric and photographic capture are just some of the processes we might encounter when goods are received.









2 WAREHOUSING

The aim of the goods warehousing process is to locate the goods in the most efficient way possible. To achieve this, this process must connect with the goods reception phase and the order picking phase within the physical product flow.

What's more, warehouses usually occupy the largest part of a logistics centre, for raw materials, finished products or general inventory.

Depending on the quantity of items, the order profiles and the warehousing requirements, we have a wide variety of manual and automatic solutions



3 ORDER PICKING

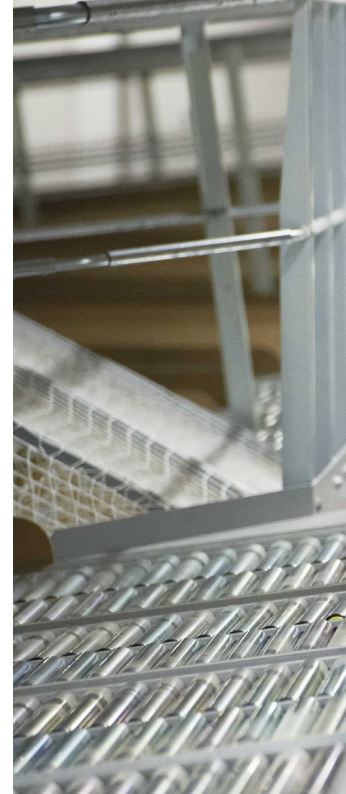
Order picking usually constitutes the heart of a distribution centre. In a factory context, the equivalent would be the kits or spare parts management area.

Depending on the order profile and the inventory, we might find operations involving automatic or semi-automatic discrete picking and batch picking.

Broadly speaking, goods to person solutions are used in operations where we are seeking operation density and high productivity, manual picking zones for operations where we are seeking greater selectivity and have more available space and even pallet picking using AGVs.









4 PACKING AND SHIPMENT

Once the order is processed, the orders must be shipped to the customers. This usually generates a packaging, consolidation, quality control and classification process, before being loaded on the means of transport.

The time slots available for truck deliveries and the free space available for preparing the loads and the number and size of the different orders to be processed require different technological solutions, from high-speed and high-density sorters to lesser equivalents.

This process might incorporate robotics, which are filmed for pallet and end of line management.



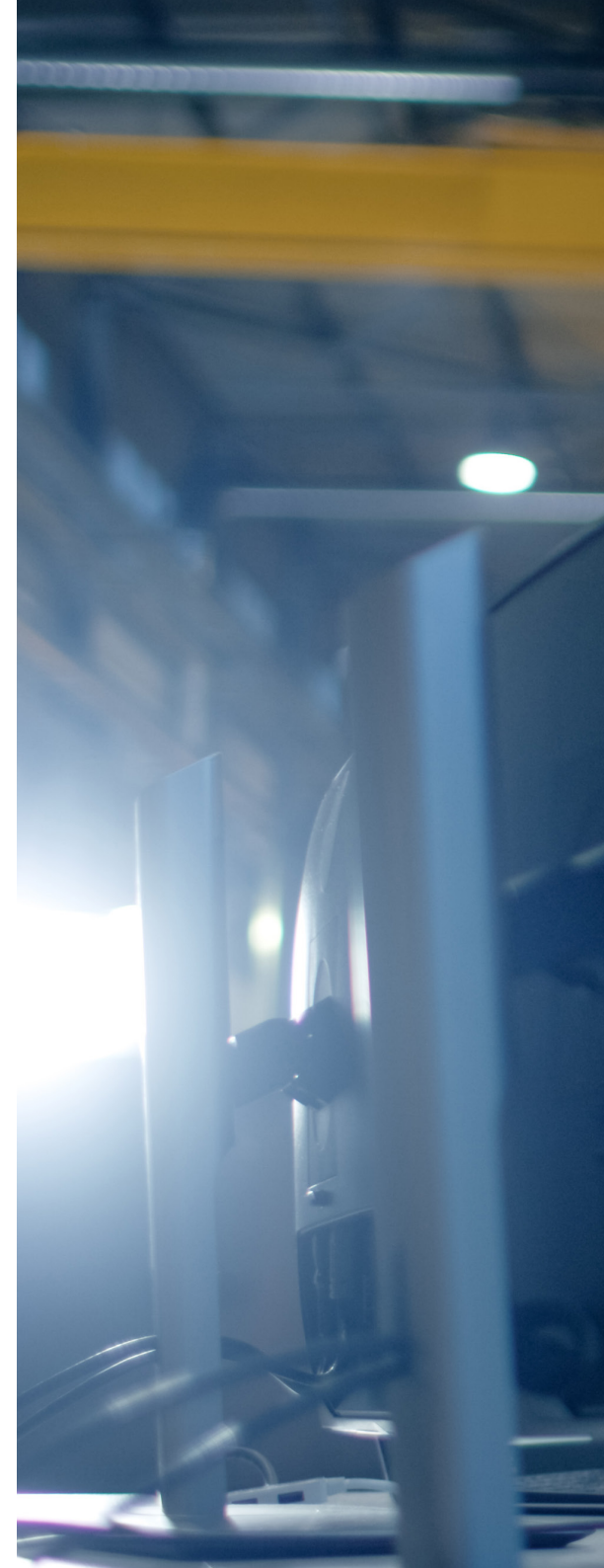
SOFTWARE

Warehouse Execution System (WES)

Toyota integrates Warehouse Control System (WCS) and Warehouse Management System into its systems.

Control management software handles the coordination with the automated systems for the execution of the orders and/or tasks to be performed by the system. Normally this focuses on the route taken by the product, order compliance management, confirmations between the system elements and their coordination.

The Warehouse Management System is normally centred on managing the inventory and workers. The quantity and location of the inventory, launching replenishment orders, launching orders in work waves, work balancing and the coordination of reception and shipment tasks. Our clients often already have computer systems at their centres or plants, and only need Toyota to implement certain modules connected to their software. In other cases, clients require the complete implementation of a centre management system. Whatever the case study and the requirement, Toyota implements the layers or modules necessary for fast and efficient Lean operation.







ALL FACILITIES

Our cornerstone: Customer Service

At Toyota Material Handling, we are aware of the importance of having a comprehensive and robust After-Sales Technical Support service. As such, Toyota focuses on delivering customised solutions to every client, making available an extensive Technical Support and Customer Service network, with VPN access for real-time problem solving.

The ability to adapt our service to the needs of your business allows us to study each case and offer the best solution, from preventive maintenance and Full Service packages to remote monitoring options, and the Toyota financing option.



TOYOTA

MATERIAL HANDLING

www.toyota-forklifts.co.uk